

Fig. 3.1

The body plan of a honey bee worker, showing the three major body regions, the mouthparts extended, the three pairs of legs, and the two pairs of wings.

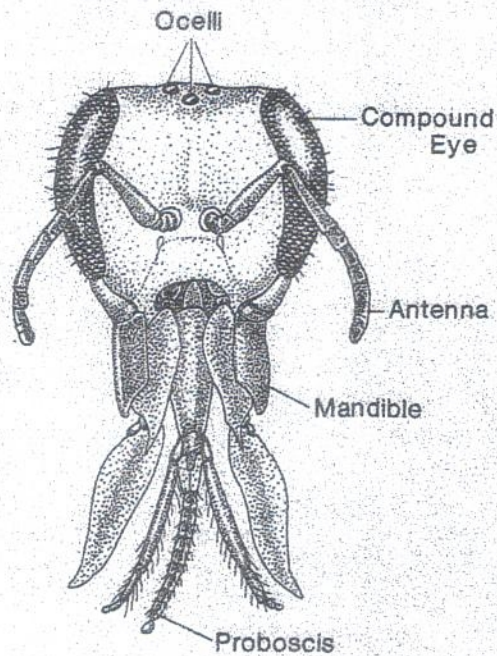


Fig. 3.2

The head of a worker bee, with the proboscis extended. (Redrawn from Snodgrass, 1956. Copyright © 1956 by Cornell University. Used by permission of Cornell University Press.)